

# Tachogenerators

Blind hollow shaft  $\varnothing 15$  mm

Nominal voltage 10 VDC to 60 VDC

## SKTD 3-... A 4



SKTD 3-... A 4 with blind hollow shaft

### Features

- High response speed
- Blind hollow shaft  $\varnothing 15$  mm
- Centering alignment  $\varnothing 60$  mm, mounting screw hole circle  $\varnothing 80$  mm
- Rotor fastening by tappet (accessories)
- Wide rotation speed range
- Recognition of sense of rotation
- Low harmonic content
- No auxiliary energy source required

### Technical data - electrical ratings

Polarity	Depending on rotational direction
Number of pole pairs	2 = 4 poles
Number of grooves, segments	29
Groove frequency	$f_N = 29/30 \times n$
Reversal tolerance	$\leq 0.1$ %
Linearity tolerance	$\leq 0.15$ %
Residual ripple	$\leq 0,4$ %
Adjustment tolerance (Nominal voltage)	$\leq \pm 10$ %
Lower limit of control range	0 rpm
Temperature coefficient	$\pm 0.1$ %/10 K (-10...+100 °C)
Isolation class	B
Carbon brush lifetime approx.	20000 Operating hours
Carbon brush	4 pieces 3 x 4 x 12
Nominal voltage	10...60 V
Maintenance	After approx. 10 000 hours in service
Interference immunity	DIN EN 61000-6-2
Emitted interference	DIN EN 61000-6-3

### Technical data - mechanical design

Shaft type	$\varnothing 15$ mm (blind hollow shaft)
Protection DIN EN 60529	IP 54
Rotor moment of inertia	600 gcm <sup>2</sup> (KTD 3-1 - KTD 3-3) 910 gcm <sup>2</sup> (KTD 3-4 - KTD 3-6)
Material	Housing: aluminium, bare / steel zinc-coated
Operating temperature	-20...+100 °C
Connection	Terminal box, 2-pin

# Tachogenerators

Blind hollow shaft  $\varnothing 15$  mm  
Nominal voltage 10 VDC to 60 VDC

SKTD 3-... A 4

## Part number

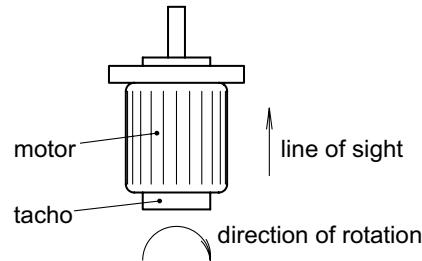
SKTD 3-  A 4

	Nominal voltage
1	10 V
2	20 V
3	30 V
4	40 V
6	60 V

When ordering please specify the desired tappet.

## Terminal assignment

Marking	Polarity
A1	positive
A2	negative

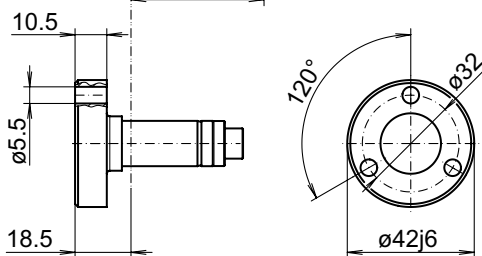
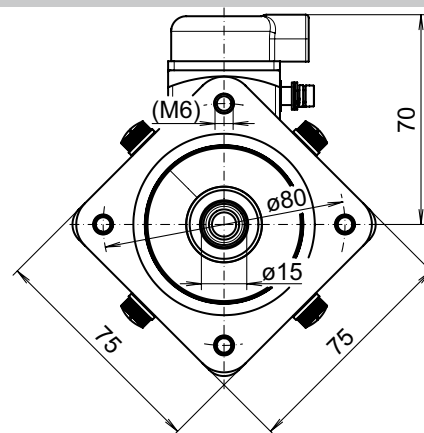
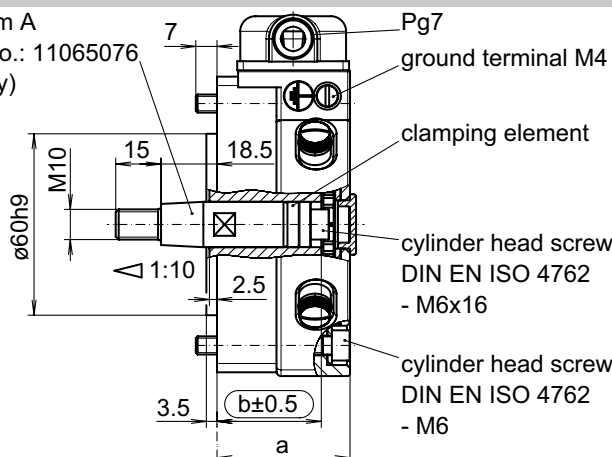


## Data according to type

Type	Rated voltage $U_N$ [mV/min <sup>-1</sup> ]	Rated current $I_N$ [mA]	max. current $I$ [mA]	max. revolution $n$ [min <sup>-1</sup> ]	Armature resistance $R_A$ (20°C) [Ω]	Weight rotor	Weight housing
(Electrical data according to 1000 rpm)							
SKTD 3-1 A 4	10	10	100	6000	45	250 g	550 g
SKTD 3-2 A 4	20	10	80	6000	170	250 g	550 g
SKTD 3-3 A 4	30	10	80	6000	170	250 g	550 g
SKTD 3-4 A 4	40	10	80	4000	220	360 g	740 g
SKTD 3-6 A 4	60	30	80	3000	220	360 g	740 g

## Dimensions

tappet form A  
material-no.: 11065076  
(accessory)



tappet form B  
material-no.: 11065075  
(accessory)

Please specify the desired tappet form in your order.

Type	VDC	a	b
SKTD 3-1 A 4	10	44	35
SKTD 3-2 A 4	20	44	35
SKTD 3-3 A 4	30	44	35
SKTD 3-4 A 4	40	54	45
SKTD 3-6 A 4	60	54	45

014- 6