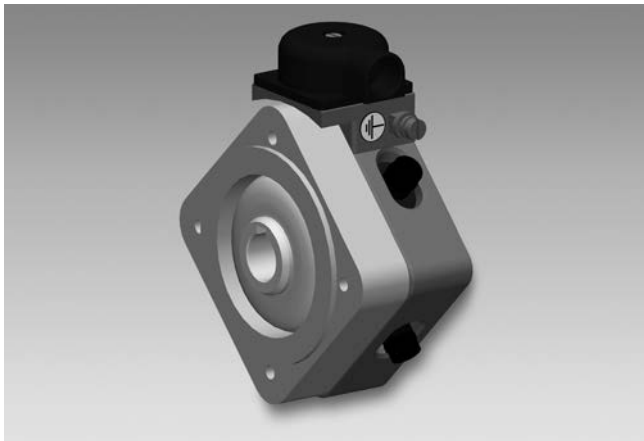


# Tachogenerators

Blind hollow shaft  $\varnothing 10$  to  $\varnothing 16$  mm

Nominal voltage 10 VDC to 60 VDC

## KTD 3-... A 4 Y38



KTD 3-... A 4 Y38 with blind hollow shaft

### Features

- High response speed
- Blind hollow shaft  $\varnothing 10...16$  mm with keyway
- Centering alignment  $\varnothing 70$  mm, mounting screw hole circle  $\varnothing 77$  mm
- Rotor fastening by cylinder screw M4
- Wide rotation speed range
- Recognition of sense of rotation
- Low harmonic content
- No auxiliary energy source required

### Technical data - electrical ratings

Polarity	Depending on rotational direction
Number of pole pairs	2 = 4 poles
Number of grooves, segments	29
Groove frequency	$f_N = 29/30 \times n$
Reversal tolerance	$\leq 0.1$ %
Linearity tolerance	$\leq 0.15$ %
Residual ripple	$\leq 0,4$ %
Adjustment tolerance (Nominal voltage)	$\leq \pm 10$ %
Lower limit of control range	0 rpm
Temperature coefficient	$\pm 0.1$ %/10 K (-10...+100 °C)
Isolation class	B
Carbon brush lifetime approx.	20000 Operating hours
Carbon brush	4 pieces 3 x 4 x 12
Nominal voltage	10...60 V
Maintenance	After approx. 10 000 hours in service
Interference immunity	DIN EN 61000-6-2
Emitted interference	DIN EN 61000-6-3

### Technical data - mechanical design

Shaft type	$\varnothing 10...16$ mm (blind hollow shaft)
Protection DIN EN 60529	IP 54
Rotor moment of inertia	600 gcm <sup>2</sup> (KTD 3-1 - KTD 3-3) 910 gcm <sup>2</sup> (KTD 3-4 - KTD 3-6)
Materials	Housing: aluminium, bare / steel zinc-coated Shaft: brass
Operating temperature	-20...+100 °C
Connection	Terminal box, 2-pin

# Tachogenerators

Blind hollow shaft  $\varnothing 10$  to  $\varnothing 16$  mm  
Nominal voltage 10 VDC to 60 VDC

KTD 3-... A 4 Y38

## Part number

KTD 3- 

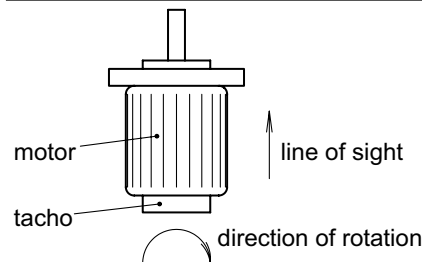
	A 4 Y38
--	---------

	Nominal voltage
1	10 V
2	20 V
3	30 V
4	40 V
6	60 V

When ordering please specify hollow shaft diameter.

## Terminal assignment

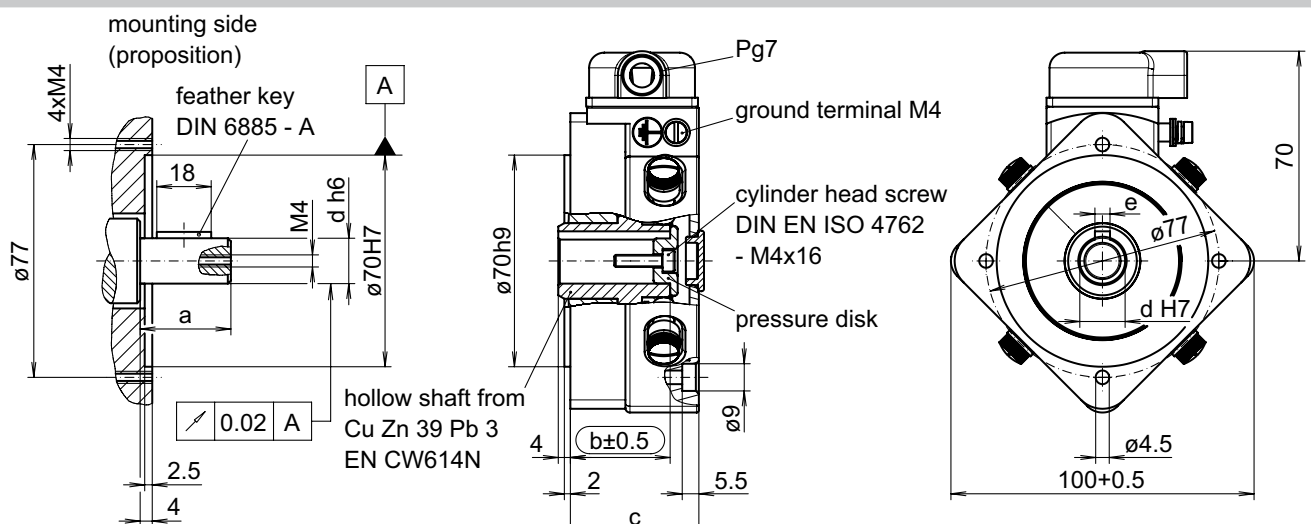
Marking	Polarity
A1	positive
A2	negative



## Data according to type

Type	Rated voltage $U_N$ [mV/min <sup>-1</sup> ]	Rated current $I_N$ [mA]	max. current $I$ [mA]	max. revolution $n$ [min <sup>-1</sup> ]	Armature resistance $R_A$ (20°C) [Ω]	Weight rotor	Weight housing
(Electrical data according to 1000 rpm)							
KTD 3-1 A 4 Y38	10	10	100	6000	45	250 g	440 g
KTD 3-2 A 4 Y38	20	10	80	6000	170	250 g	440 g
KTD 3-3 A 4 Y38	30	10	80	6000	170	250 g	440 g
KTD 3-4 A 4 Y38	40	10	80	4000	220	360 g	570 g
KTD 3-6 A 4 Y38	60	30	80	3000	220	360 g	570 g

## Dimensions



Type	VDC	a	b	c
KTD 3-1 A 4 Y38	10	30	33.5	42.5
KTD 3-2 A 4 Y38	20	30	33.5	42.5
KTD 3-3 A 4 Y38	30	30	33.5	42.5
KTD 3-4 A 4 Y38	40	40	43.5	52.5
KTD 3-6 A 4 Y38	60	40	43.5	52.5

optional	d	e
	10	3+0.012/-0.013
	12	4-0.012/-0.042
	14	5-0.012/-0.042
	15	5-0.012/-0.042
	16	5-0.012/-0.042

014- 5 Y38