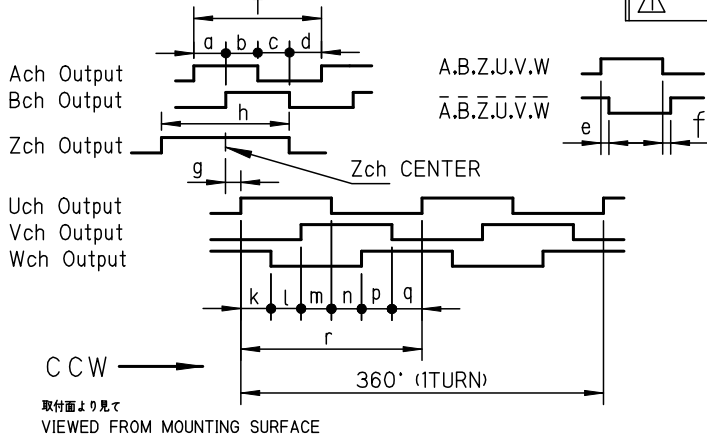


FA-コーダ 仕様書
FA-CODER SPECIFICATION

Preliminary

機能名 NOMENCLATURE	0IH35-2000P4-L6-5V		型式 MODEL	TS5212N397	
電源 SUPPLY	DC+5V ±5%		外形図 OUTLINE	052125003F40	
	200 mA MAX. (Non Load)		出力リード線 OUTPUT LEADWIRE	L=500mm MIN	
項目 REQUIREMENT	仕様 VALUE	備考 NOTE	項目 REQUIREMENT	仕様 VALUE	備考 NOTE
符号 CODE	INCREMENTAL インクリメンタル		慣性能率 MOMENT OF INERTIA	1×10 ⁻⁶ kg·m ² MAX.	設計値 TYPICAL
分解能 RESOLUTION	2000 C/T	Zch 1 C/T UVWch 2 C/T	摩擦トルク STARTING TORQUE	5.9×10 ⁻³ N·m MAX.	AT 20°C
出力回路 OUTPUT CIRCUIT	LINE DRIVER 26C31		最大回転速度 SLEW SPEED	6000 min ⁻¹ MAX.	機械的 MECHANICAL
出力信号 OUTPUT SIGNAL	"1"	DC+2.4V MIN.	入力軸 許容位置ズレ ALLOWABLE SHAFT DISPLACEMENT	半径方向 RADIAL	0.05 mm TIR MAX.
	"0"	DC+0.5V MAX.		軸方向 AXIAL	0.2 mm MAX.
許容出入力電流 SINK/SOURCE CURRENT	±20 mA MAX.	設計値 TYPICAL	軸倒れ ANGLE	0.1° MAX.	
立上り・立下り時間 RISE/FALL TIME	100 nsec MAX.	設計値 TYPICAL	許容角加速度 ACCELERATION RATE Δ	80000 rad/sec ²	
応答周波数 FREQUENCY RESPONSE	250 kHz MAX.	電氣的 ELECTRICAL	質量 MASS	0.25 kg MAX.	
絶縁抵抗 INSULATION RESISTANCE	10MΩ	DC500VMEGA GND-CASE	動作温度範囲 OPERATING TEMP.	-20°C ~ +100°C	
絶縁耐圧 DIELECTRIC STRENGTH	AC500V 1min.	GND-CASE	保存温度範囲 STORAGE TEMP.	-25°C ~ +100°C	
ノイズ耐量 NOISE MARGIN	80 v	1μsec GND-CASE.GND-5V	耐湿性 HUMIDITY	95 %RH MAX.	結露させぬこと WITHOUT CONDENSATION
位相差 e,f DIFFERENT OF PHASES (e,f)	100 nsec MAX.		光源 LIGHT SOURCE	LED	
累積ピッチ誤差 ABSOLUTE ACCURACY	50 arc·sec MAX.	0~250KHz	耐振動性 VIBRATION	1.5mm, 5~40Hz 49m/s ² , 40~200Hz	3方向各2Hr 3AXIS 2Hr EACH
隣接ピッチ誤差 EDGE TO ADJACENT ACCURACY	0.01T MAX.	0~250KHz	耐衝撃性 SHOCK	490m/s ² , 11msec	6方向各3回 6AXIS 3TIMES EACH
			保護構造 PROTECTION	IP=40	IEC529
			ベアリング BEARING	6801VV with Urea grease	



$$T = \frac{360^\circ}{2000}$$

$$a, b, c, d = \frac{T}{4} \pm \frac{T}{8}$$

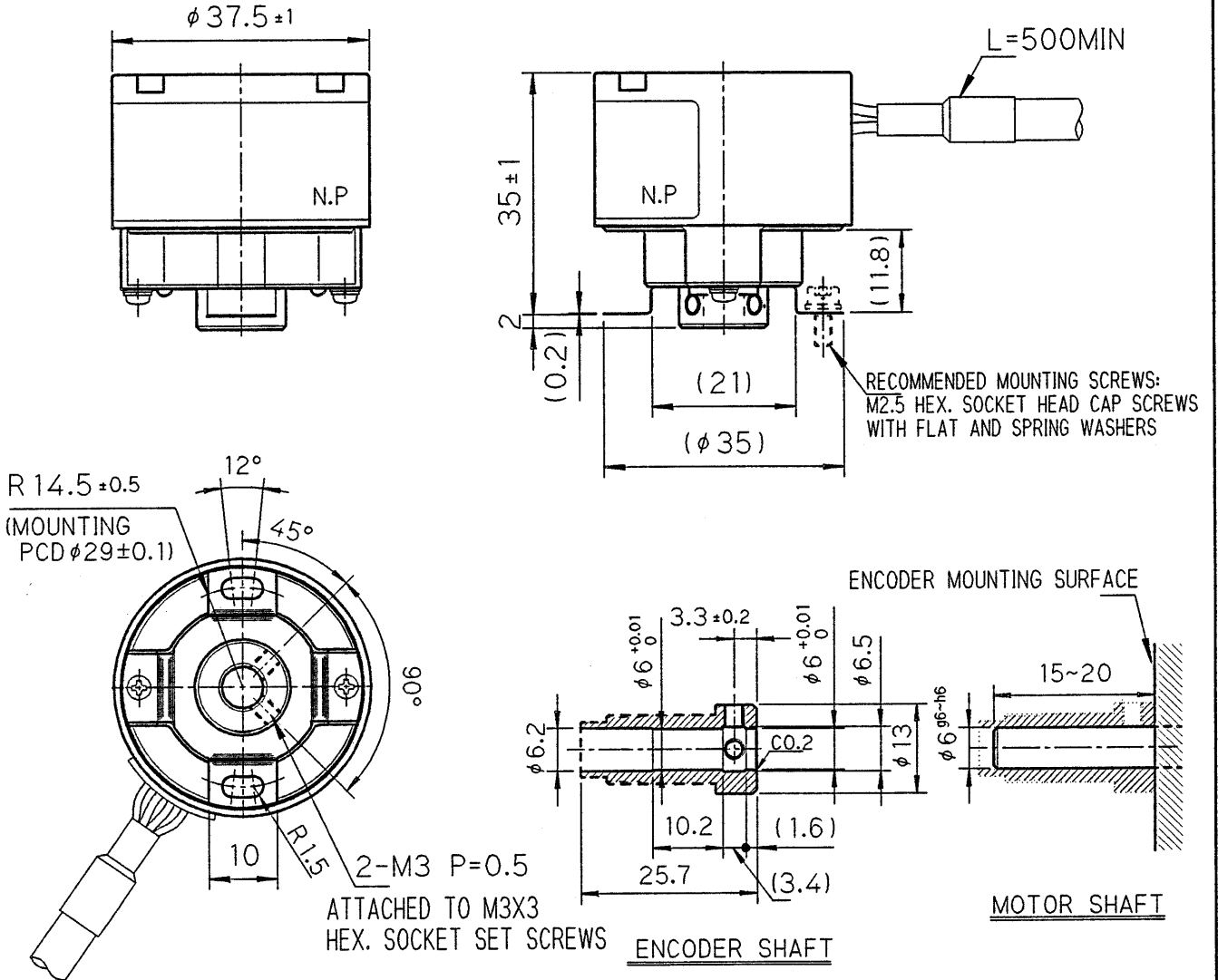
$$h = T \pm \frac{T}{2}$$

k, l, m, n, p, q = 30° ± 1.5° (MECHANICAL)
r = 180° ± 1.5° (MECHANICAL)
g = ± 1° (BETWEEN Zch CENTER AND Uch RISE)

CONNECTION	PAIR NO.	COLOR	FUNCTION	PAIR NO.	COLOR	FUNCTION	PAIR NO.	COLOR	FUNCTION
	1		BLUE	Ach Output	4	BROWN	Uch Output	7	RED
		BLUE/BLACK	\bar{A} ch Output			BROWN/BLACK	\bar{U} ch Output		
2		GREEN	Bch Output	5	GRAY	Vch Output	SHIELD		NC
		GREEN/BLACK	\bar{B} ch Output			GRAY/BLACK	\bar{V} ch Output	(CABLE SIZE)	
3		YELLOW	Zch Output	6	WHITE	Wch Output	OD: φ6±0.3		
		YELLOW/BLACK	\bar{Z} ch Output			WHITE/BLACK	\bar{W} ch Output	LEAD: AWG 28	

△ 05. 6.17	△ 12. 5.28	△ . . .	△ . . .	△ . . .	ED' N NO. []							
DS'D K.Nakata	DATE 05. 6.10	MODEL NO. TS5212N397			TITLE FAコーダ仕様書 FA-CODER SPECIFICATION							
CH'D	DWG NO.	3	4	5	6	7	8	9	10	11	12	SHEET
APP'D	SPC004208Y00 /											

REVISIONS		
NO.	DESCRIPTION	DATE / SIGN



NOTES

1. Z IS GENERATED WHEN HUB IS ORIENTED AS SHOWN ABOVE.
2. SHAFT LENGTH $15 \sim 20$ mm MAX. FROM MOUNTING SURFACE.
3. PULLING THE CABLE CAUSES DISCONNECTION OF LEADS FROM THE ENCODER.
4. PLEASE USE A BALL POINT WRENCH OR HEX KEY WRENCH (FIG.1) TO TIGHTEN THE MOUNTING SCREW.
5. DIMENSIONS TOLERANCE ± 0.5 mm (UNLESS OTHERWISE SPECIFIED)

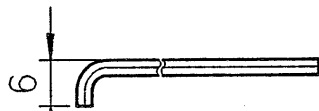


FIG.1 HEX KEY WRENCH

DS'DW <i>Hana</i>	DATE 96. 8.21	MODEL NO.					TITLE FA-CODER					
<i>S. Nakajima</i>	SCALE 1/1	3RD ANGLE PROJECTION					OUTLINE					
CH'D <i>R. Tamaya</i>	DWG NO.	3	4	5	6	7	8	9	10	11	12	SHEET
APP'D <i>M. Yoden</i>	052125003F40											/